



Cross the small brook, go past Shilla Mill, follow this track all the way to Polzeath Beach



Go past the 17th hole into the trees ahead



Cross the golf course towards the trees



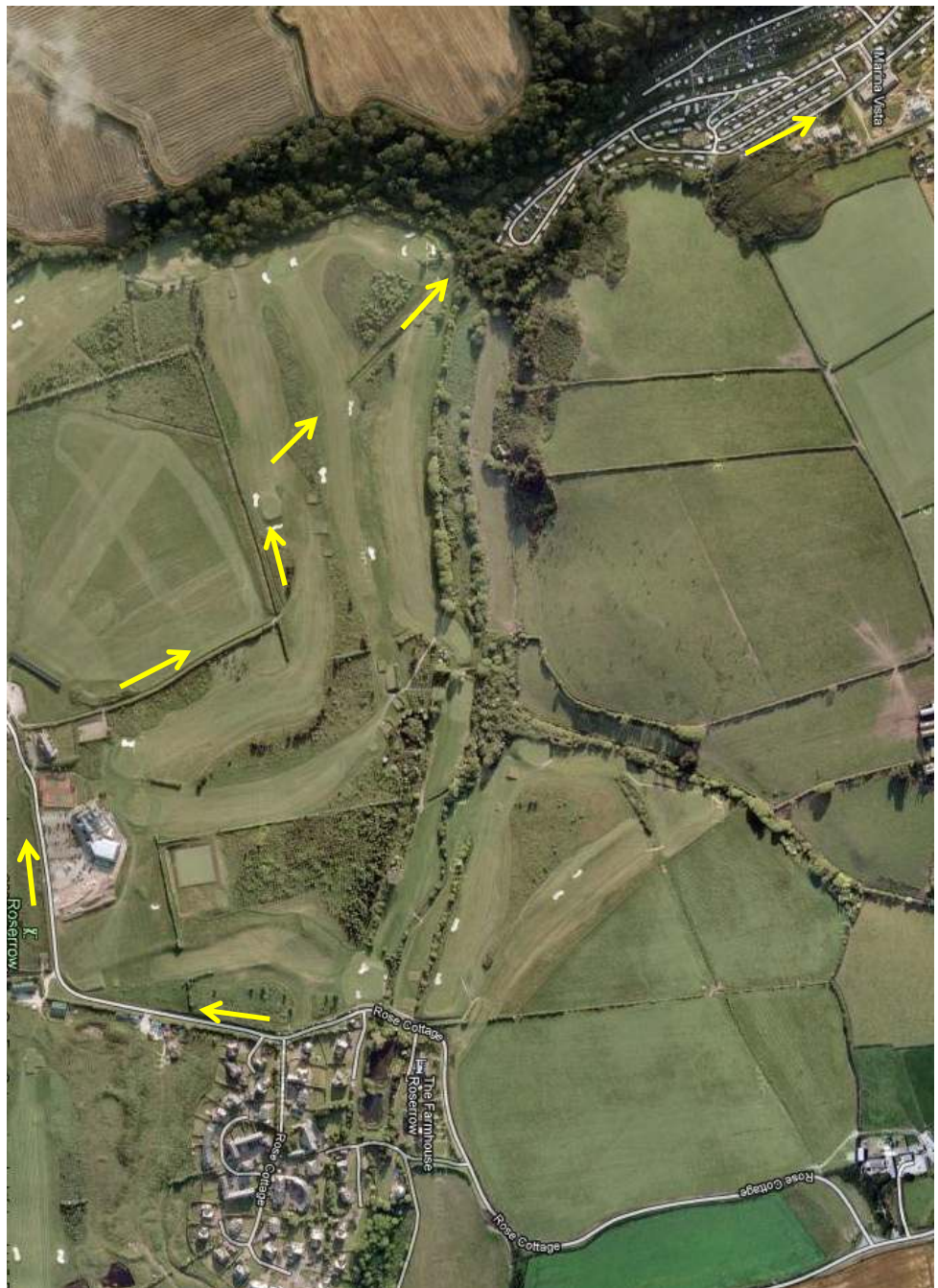
Turn left alongside the hedgerow



Follow the footpath signposted Polzeath



Continue past The Point Golf Club



Walk up the hill towards The Point



Walk from Webb's Retreat to Polzeath Beach
Turn left at the end of Farmhouse Lane